

## Upgrading Your Tow Vehicle or Trailer May Require a CDL Operator!

By Tom Junge, Iowa Field Director

Looking to increase the size of your trailer or towing vehicle? Be aware that these larger combination vehicles may require your employees to acquire a commercial driver's license (CDL). Unfortunately, two Iowa dealers recently found this out. The Iowa Department of Transportation (DOT) offers a helpful flow chart to help you determine when you will need a CDL or chauffeurs' license. Following is a brief overview:

### **Commercial Driver's License**

A commercial driver's license is required for anyone driving a:

- ❖ Single vehicle with a gross weight rating (GVWR) of more than 26,000 pounds.
- ❖ Combination vehicle with a gross combined weight rating (GCWR) of more than 26,000 pounds when the towed unit is over 10,000 pounds.
- ❖ Vehicle that carries 16 or more passengers.
- ❖ Vehicle that transports hazardous materials requiring placards.

To help you determine which class of CDL is required, follow the flow chart below. Always start at the top, left-hand corner.

A driver issued a Class A CDL may drive either a group A, B or C commercial motor vehicle with the proper endorsements. A driver issued a Class B CDL may drive group B or C commercial vehicles with the proper endorsements. A driver issued a Class C CDL may only drive group C commercial motor vehicles.

### **Class D – Chauffeur's License**

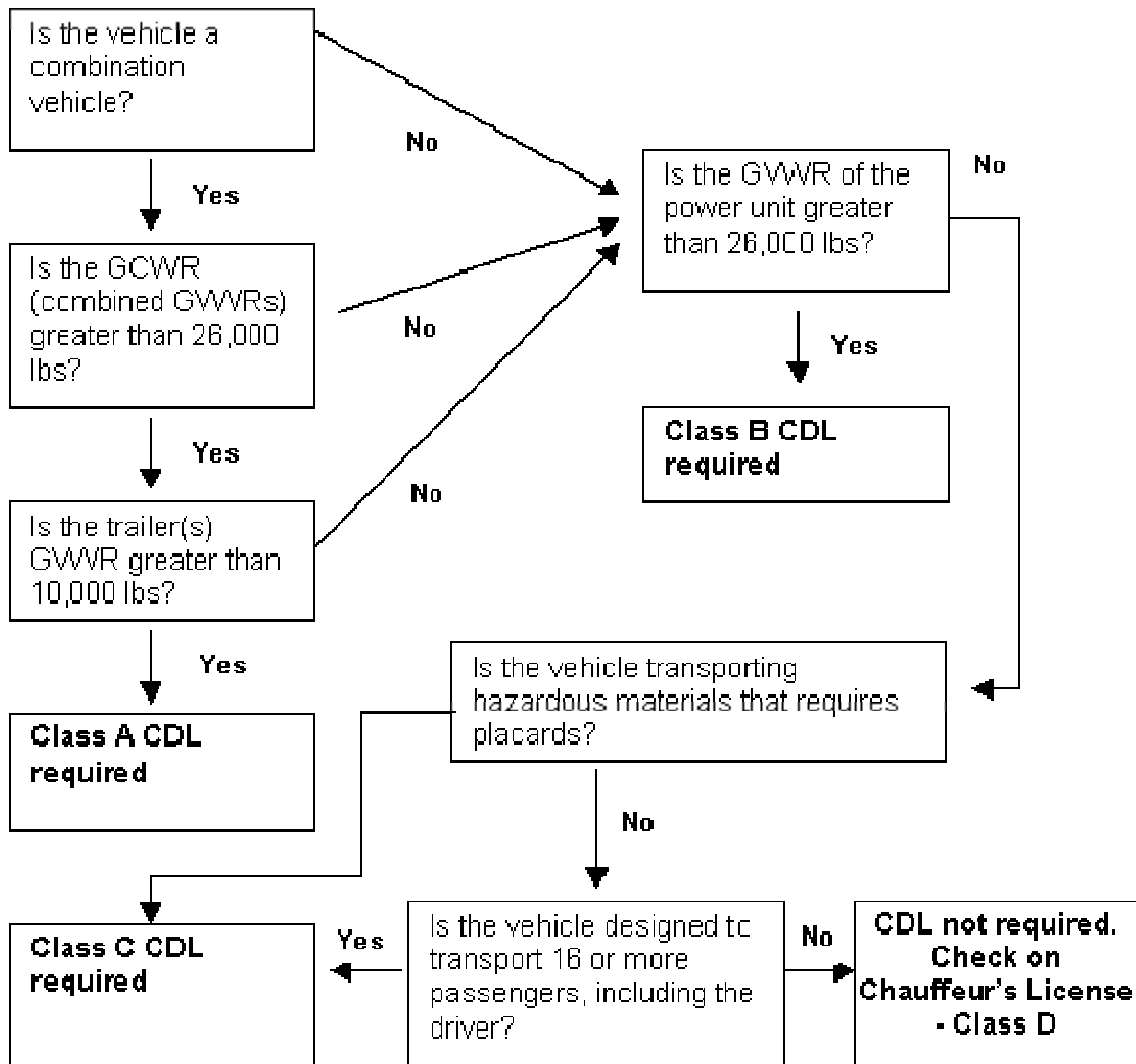
A class D chauffeur's license with applicable endorsement is required in the following situations:

D1 – A truck-tractor/semi-trailer combination owned by a farmer and operated by the farmer or hired hand, when claiming the 150 air-mile CDL exception.

D2 – A person operating a truck with a GVWR of 16,001 to 26,000 pounds.

D3 – A person paid or compensated to operate a vehicle designed to transport 15 or fewer passengers, including the driver.

The minimum age requirement for Class D is 18 years of age.



For a nice reference manual, visit [www.iamvd.com/omve/truckguide.pdf](http://www.iamvd.com/omve/truckguide.pdf).